

# Joomla 2.5 QuickStart installation

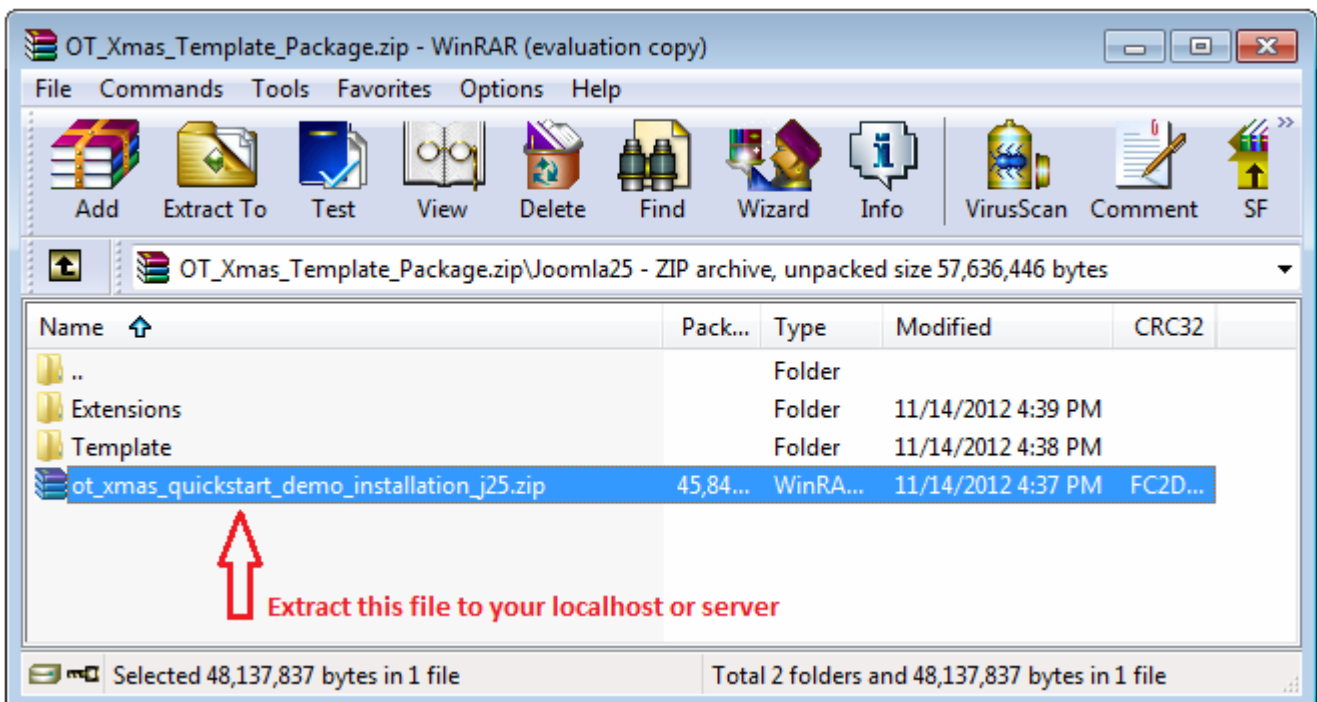
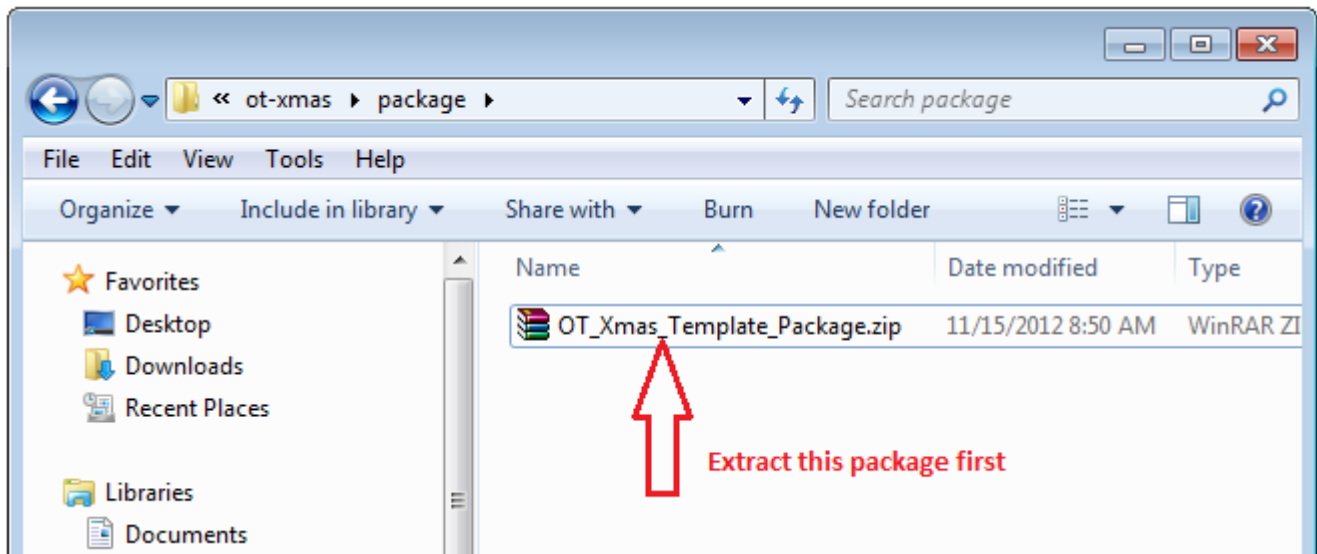
## STEP 1: DOWNLOAD PACKAGE

All Joomla 2.5 QuickStart packages that are complete copy of Omegatheme.com demo site.

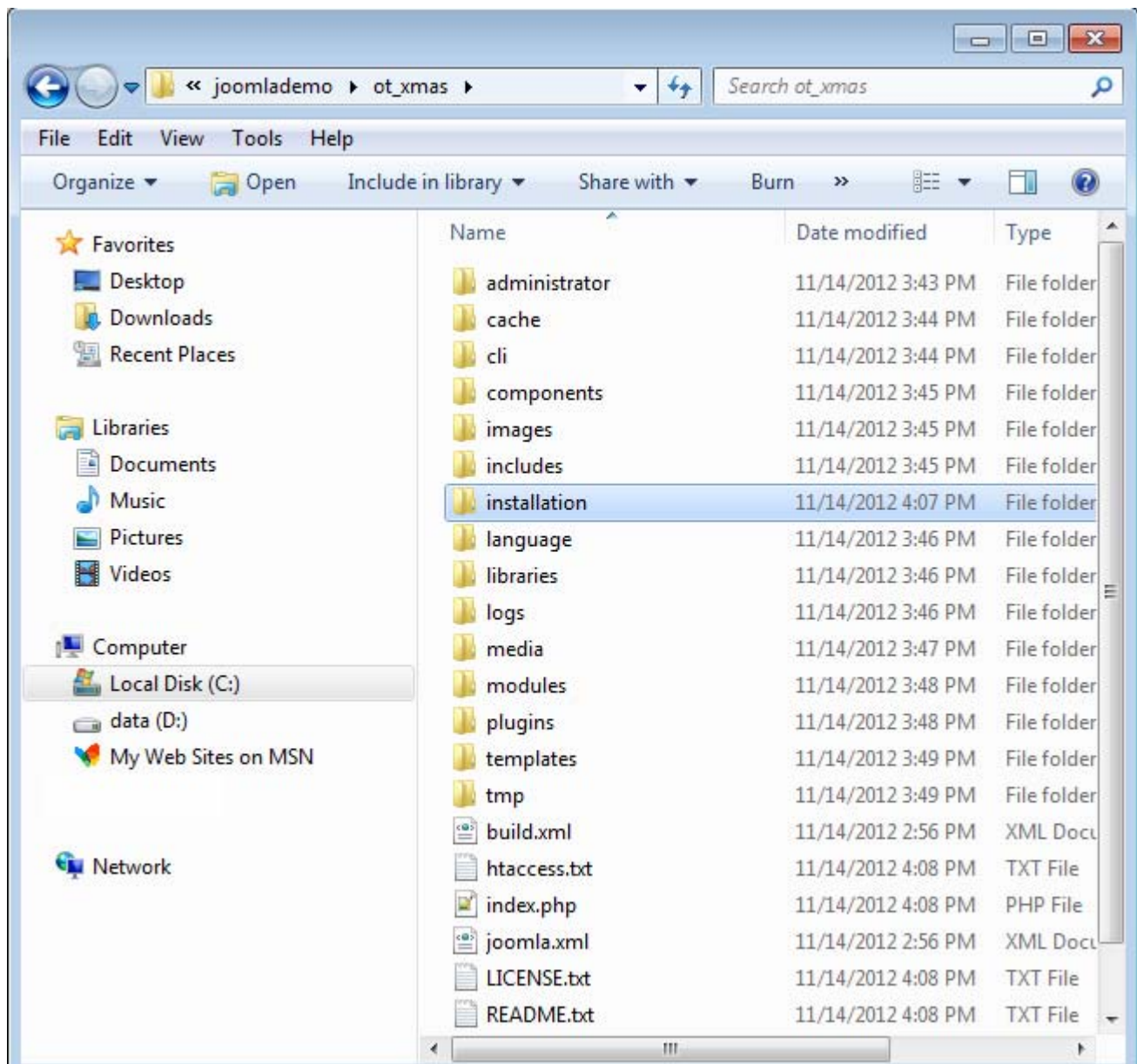
Such a QuickStart package thus contains Joomla 2.5 with all extensions used in demo and all demo content.

To navigate to the download area please click here to go to the <http://www.omegatheme.com/joomla-templates/>.

## STEP 2: EXTRACT PACKAGE



Here you can see all extracted file and folder:

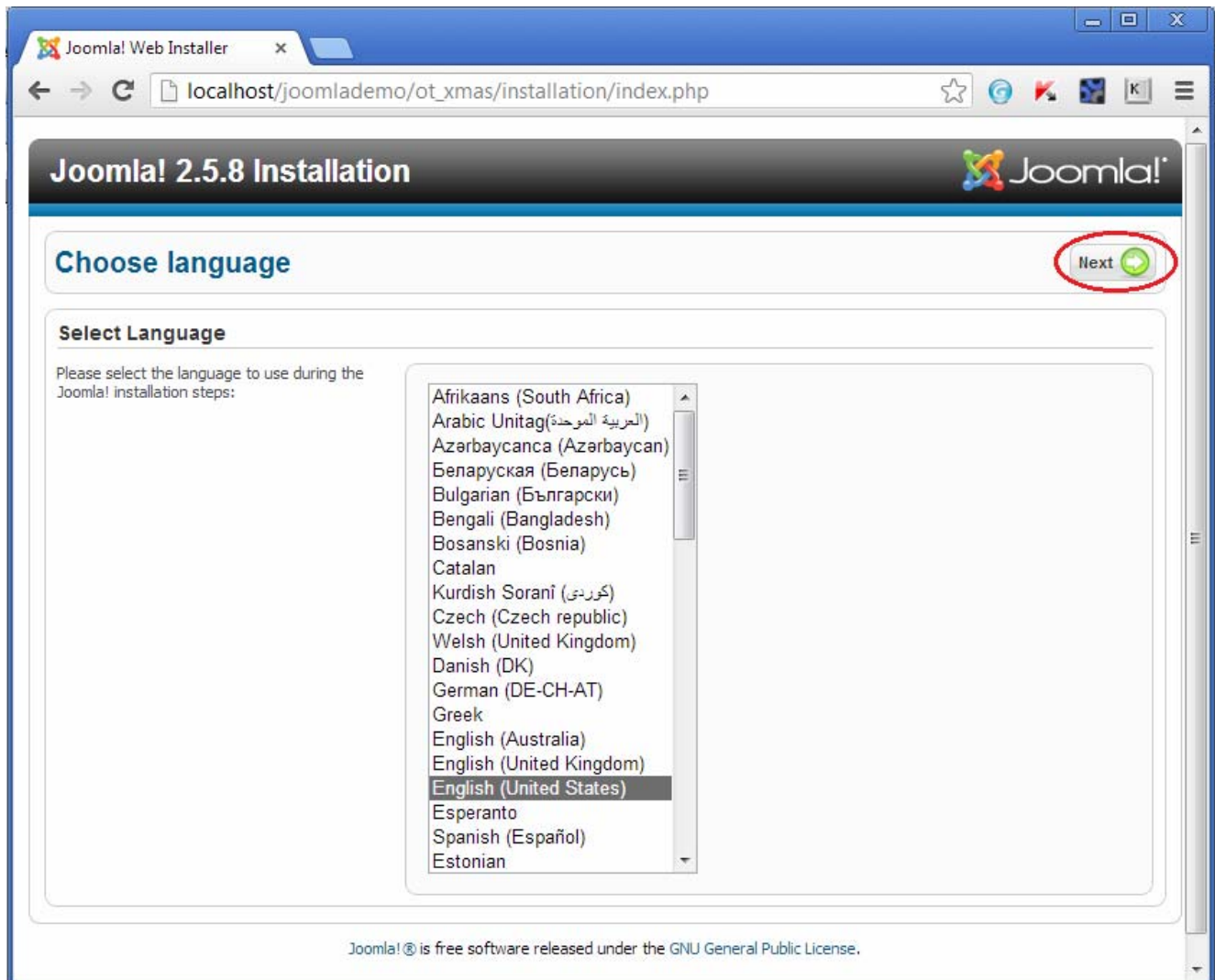


## STEP 2: INSTALLATIONS

Open your web browser and navigate to the folder that you uploaded your package to. Your url might look like this <http://www.mysite.com/joomla/index.php> or [http://localhost/joomlademo/ot\\_xmas](http://localhost/joomlademo/ot_xmas)

You will see initial Joomla install screen:

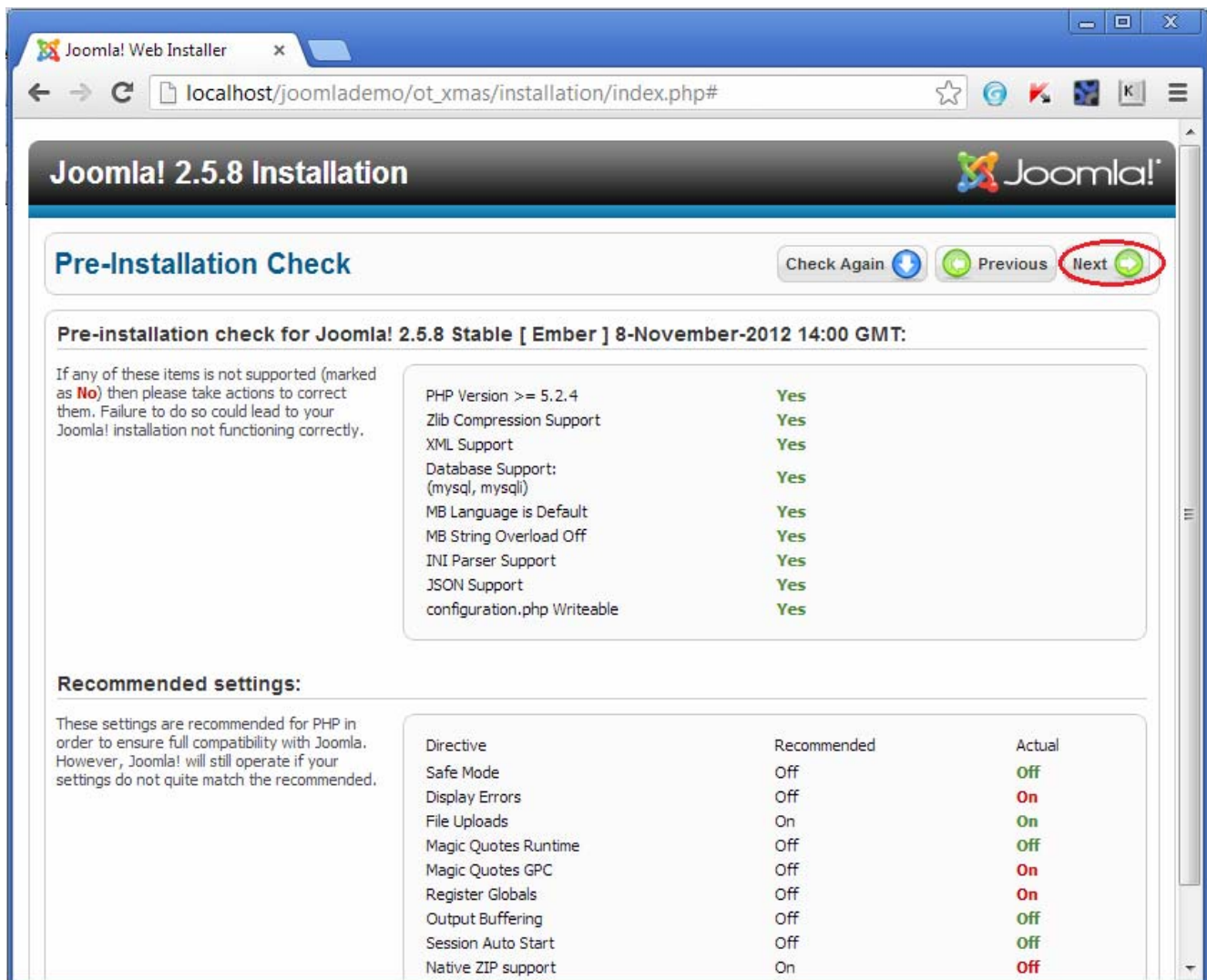
- **Language installation:**



- **Server system requires:**

This page will give you a sense of your server compatibility. You will need to troubleshoot any of the flagged areas that are unsuitable for a Joomla installation before you continue here. Please mind that every potential wrong setting can bring many headaches. Once you get the all clear ... click next again.

**Make sure safe mode always off for installation extensions without problems**



### - Server system requires:

This step shows only license agreement that you need to accept.

### - Database configuration:

The details you enter here are important as this is where the actual information for your Joomla installation are going to be stored. In a nutshell you need to create a mysql database, a user for the database and then assign that user to the database you created. This step requires a slight detour and we need to open up cpanel on our server.

Once you know database host name and user/password you can continue to next step as there is reason to change DB prefix. Since Joomla 1.7 this is random generated and limiting possibility to override other installation inside same database.

Joomla! Web Installer

localhost/joomlademo/ot\_xmas/installation/index.php#

## Joomla! 2.5.8 Installation

### Database Configuration

Previous Next

#### Connection Settings

A Joomla! website stores all of its data in a database. This screen gives the installation program the information needed to create this database.

If you are installing Joomla! on a remote web server, you will need to get this information from your host.

Some web hosts require that you create the database before you install Joomla!. If you get the message "Could not connect to the database", check that your user name and password are correct. If you still get this message, check with your host to see if you need to create the database before installing Joomla!.

#### Basic Settings

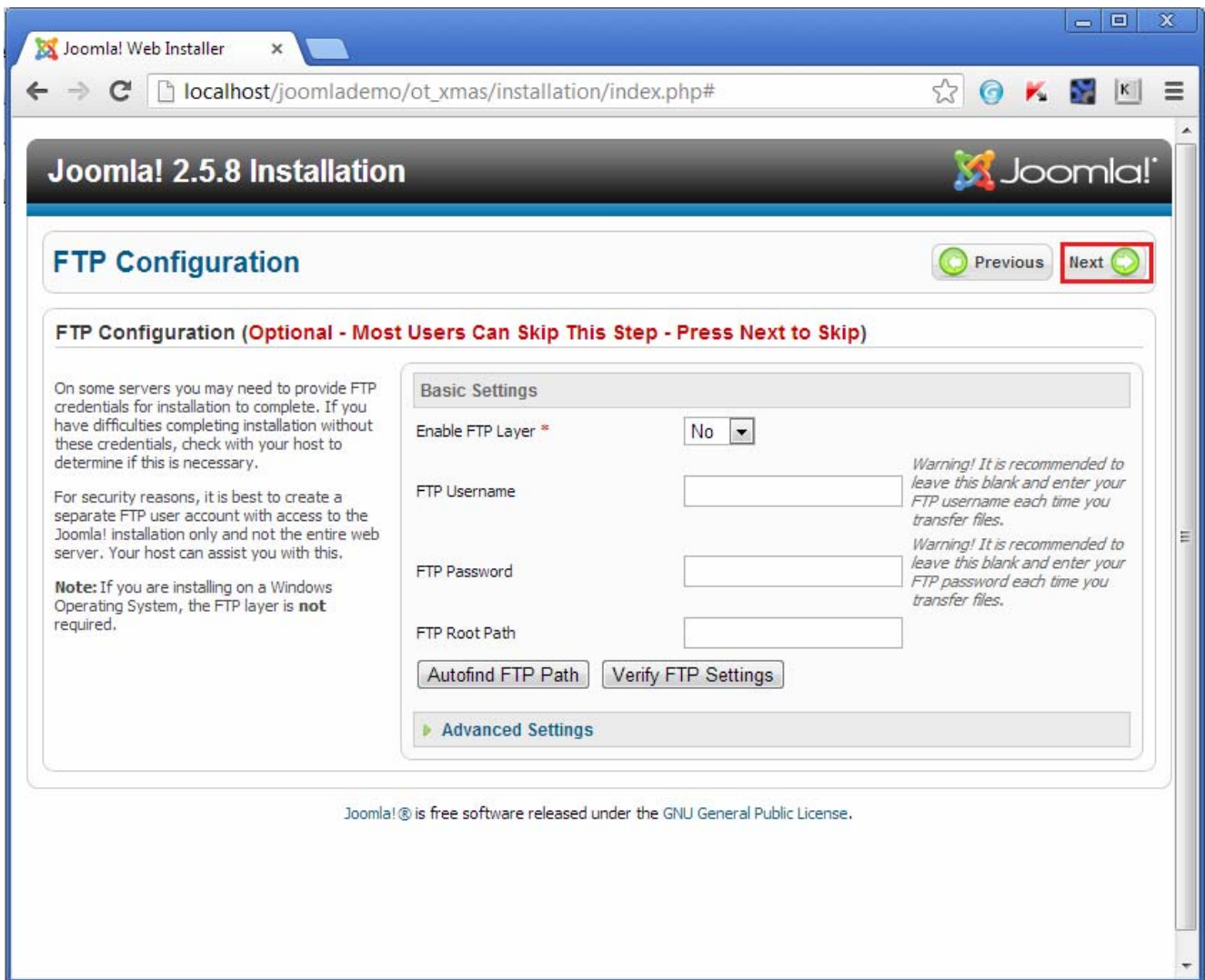
Database Type *	Mysqli	<i>This is probably "MySQLi"</i>
Host Name *	localhost	<i>This is usually "localhost"</i>
Username *	root	<i>Either something as "root" or a username given by the host</i>
Password	....	<i>For site security using a password for the mysql account is mandatory</i>
Database Name *	ot_xmas	<i>Some hosts allow only a certain DB name per site. Use table prefix in this case for distinct Joomla! sites.</i>
Table Prefix *	omegaxl	<i>Choose a table prefix or use the <b>randomly generated</b>. Ideally, three or four characters long, contain only alphanumeric characters, and <b>MUST</b> end in an underscore. <b>Make sure that the prefix chosen is not used by other tables.</b></i>
Old Database Process *	<input checked="" type="radio"/> Backup <input type="radio"/> Remove	<i>Any existing backup tables from former Joomla! installations will be replaced</i>

Joomla! ® is free software released under the GNU General Public License.

#### - FTP configuration:

Most user will not have to deal with this setting unless they have Safe Mode enabled or they know their hosting doesn't allow normal extension installation. But this has no impact on QuickStart installation and you can edit this setting later inside Joomla Global Configuration.





- **Main configuration:**

Most important on this page is Sample Data Installation. Also due to security reasons as a user name I recommend other name than admin.

Joomla! Web Installer

localhost/joomlademo/ot\_xmas/installation/index.php#

Joomla! 2.5.8 Installation

Joomla!

Main Configuration

Previous

Next

Site Name

Enter the name of your Joomla! site.  
Optional:  
You can also enter Meta Description and Meta keywords for your site.  
You may also decide if the site frontend may be immediately available or not after the installation is completed.

Basic Settings

Site Name \*

Demo

Advanced Settings - Optional

Confirm the Admin email and Password.

Enter your email address. This will be the email address of the Web site Super Administrator. Enter a new password and then confirm it in the appropriate fields. You may change the default username **admin**. These will be the Username and password that you will use to login to the Administrator Control Panel at the end of the installation.  
If you are migrating, you can ignore this section. Your current settings will be automatically migrated.

Your Email \*

demo@omega-demo.com

Admin Username \*

admin

Admin Password \*

.....

Confirm Admin Password \*

.....

Load sample data

Important!: It is strongly recommended that new Joomla! users install the default sample data. To do this click on the button *before* moving to the next stage.

1. Sample data:

Before leaving the installation, you can populate the site database with data. There are two ways to do this:  
  
1a. Default sample data can be inserted. To do this, make sure the Default English (GB)

Sample Data set

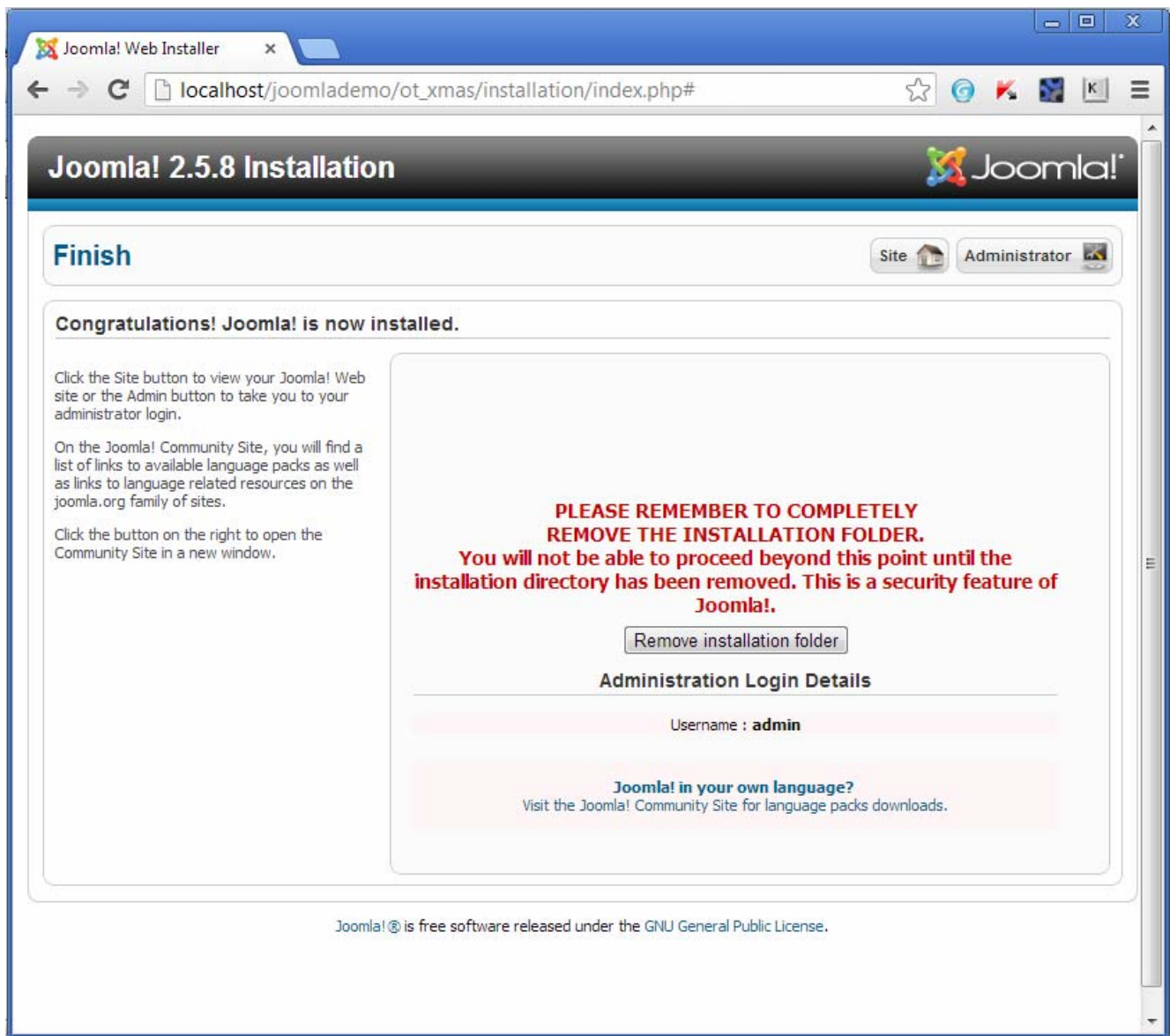
Install Sample Data

☐ Blog English (GB) Sample Data

☐ Brochure English (GB) Sample Data

☒ Default English (GB) Sample Data

Installing sample data is strongly recommended for beginners. This will install sample content that is included in the Joomla! installation package.



Once you have done that you should successfully be able to navigate to the front end of your site and see the template set up exactly the same way as the demo site.



## **IMPORTANT FOR VIRTUEMART TEMPLATE:**

**After installed demo package then you will not see Vendor tab in Backend -> VM -> Shop -> Shop**, so please do follow step to get Vendor back:

### **1. Backend -> VM -> Shop -> Additional Information**

- Fill out all information that it required then save

### **2. Backend -> VM -> Orders & Shoppers -> Shoppers**

- Enable Vendo for your administrator account that you fill out full info at step 1

### **2. Backend -> VM -> Shop -> Vendor**

- Add new Vendor and done, you can change Currency from here.

You are now free to edit, change and add to the site to personalise it and start to market your Joomla web presence. Good Luck.